

Briefing to Cheltenham, Gloucester and Tewkesbury Town and Parish Councils



Ian Bowen and Adam Gooch on behalf of the Strategic & Local Plan
(SLP) authorities

31 January 2024

What we would like to brief you on

- Why do we need a Plan?
- What is the Strategic and Local Plan (SLP)?
- First key stage – ‘Issues and options’
 - What is the purpose?
 - What are we consulting on?
 - How can you get involved and shape the Plan?

Why do we need a plan?



- Our population will continue to grow and age
 - Our communities will need more:
 - Homes of the right type
 - Workspaces
 - Transport Infrastructure
 - Schools
 - Shops etc,
- ... all of which needs to be co-ordinated

Why do we need a plan?

- Development Plans are the foundation of the planning system.
- The procedures and requirements for their preparation are subject to rigorous rules set out in the legislation, the National Planning Policy Framework (NPPF) and Planning Practice Guidance (PPG).
- The NPPF requires a positive vision for the area and the promotion of sustainable development.

Why are the councils working together?

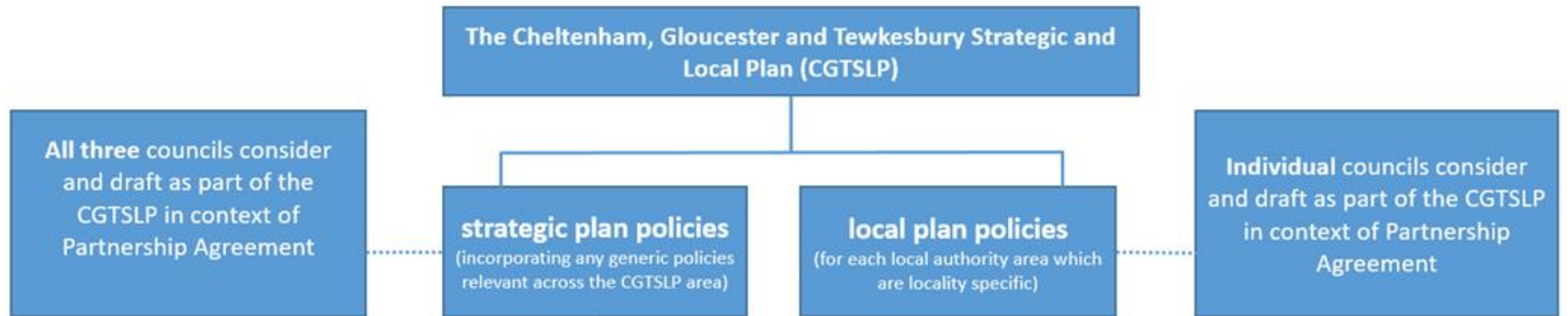
- Duty to Co-operate
- Shared functional housing and economic market areas
- Strategic/local road and public transport networks span out boundaries
- Other infrastructure needs cross boundaries
- Time, technical and financial efficiencies in commissioning evidence base
- Single Public Examination, not three
- Most effective way of maintaining up to date policies

What is the SLP?

- Strategic and other planning policies covering the entirety of the area, and
- Local plan policies addressing any locality specific issues and opportunities for each authority
- Will supersede (when adopted) the Joint Core Strategy and the various Local Plans for Cheltenham, Gloucester and Tewkesbury
- First key stage: Issues and Options

Structure of the SLP

The Cheltenham, Gloucester and Tewkesbury Strategic and Local Plan (CGTSLP)



Issues and Options: What are we consulting on?

Purpose: Early engagement to identify issues and shape priorities. First of two-part Reg 18 stage.

31 questions

- What timeframe should the SLP cover?
- What should the vision and the strategic objectives for the area be?
- What policies should be cross-boundary, and which are of local significance?
- How should it respond to climate change and nature recovery?
- How much development should be planned for?
- How could it be delivered in a sustainable way? Presents 6 development 'scenarios'

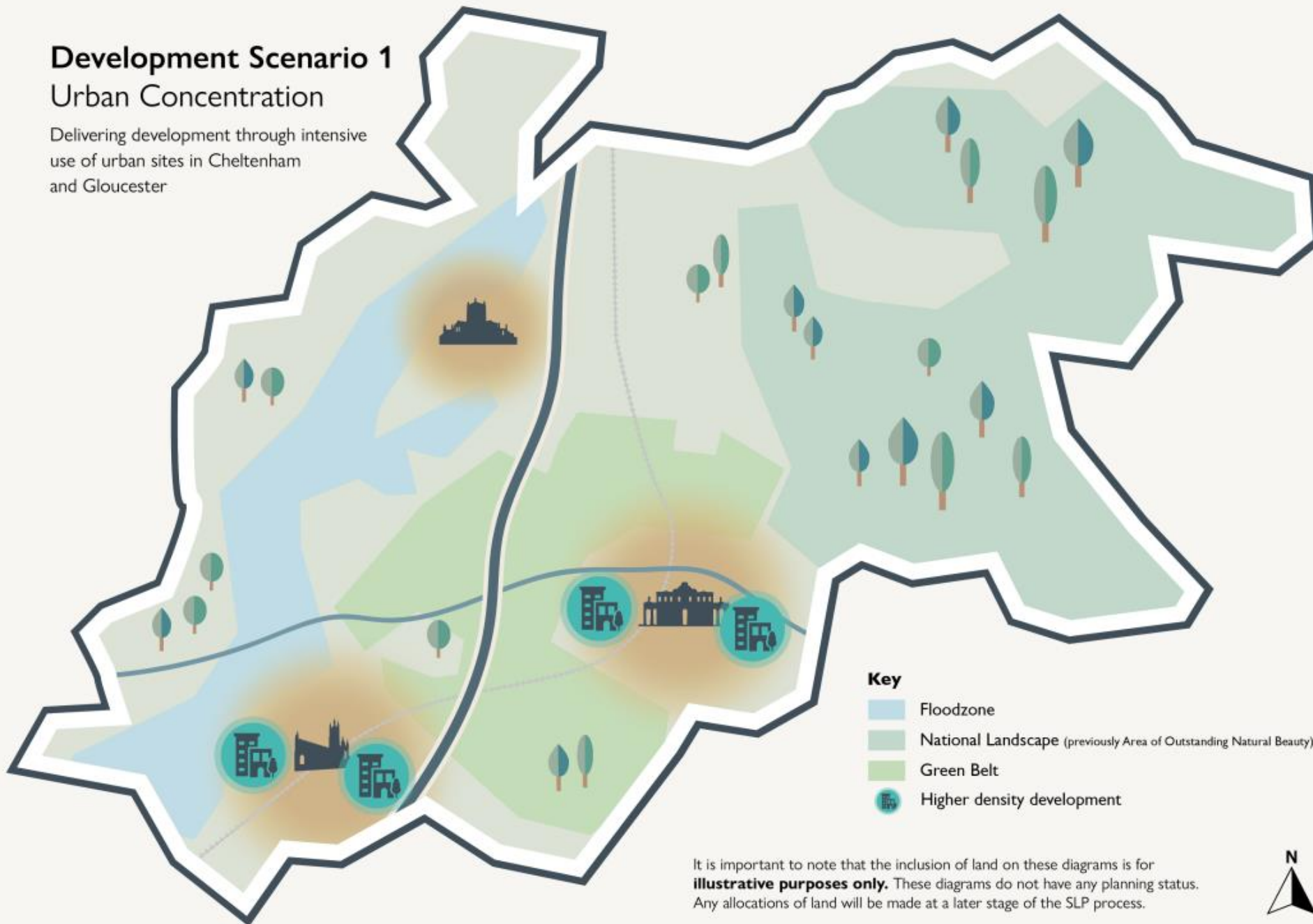
Also consulting on draft Housing and Economic Land Availability Assessment (HELAA)

Development scenarios

- Urban concentration
- Urban extensions
- Urban extensions, excluding Green Belt
- New strategic settlements
- Rural dispersal
- Sustainable transport

Development Scenario 1 Urban Concentration

Delivering development through intensive use of urban sites in Cheltenham and Gloucester



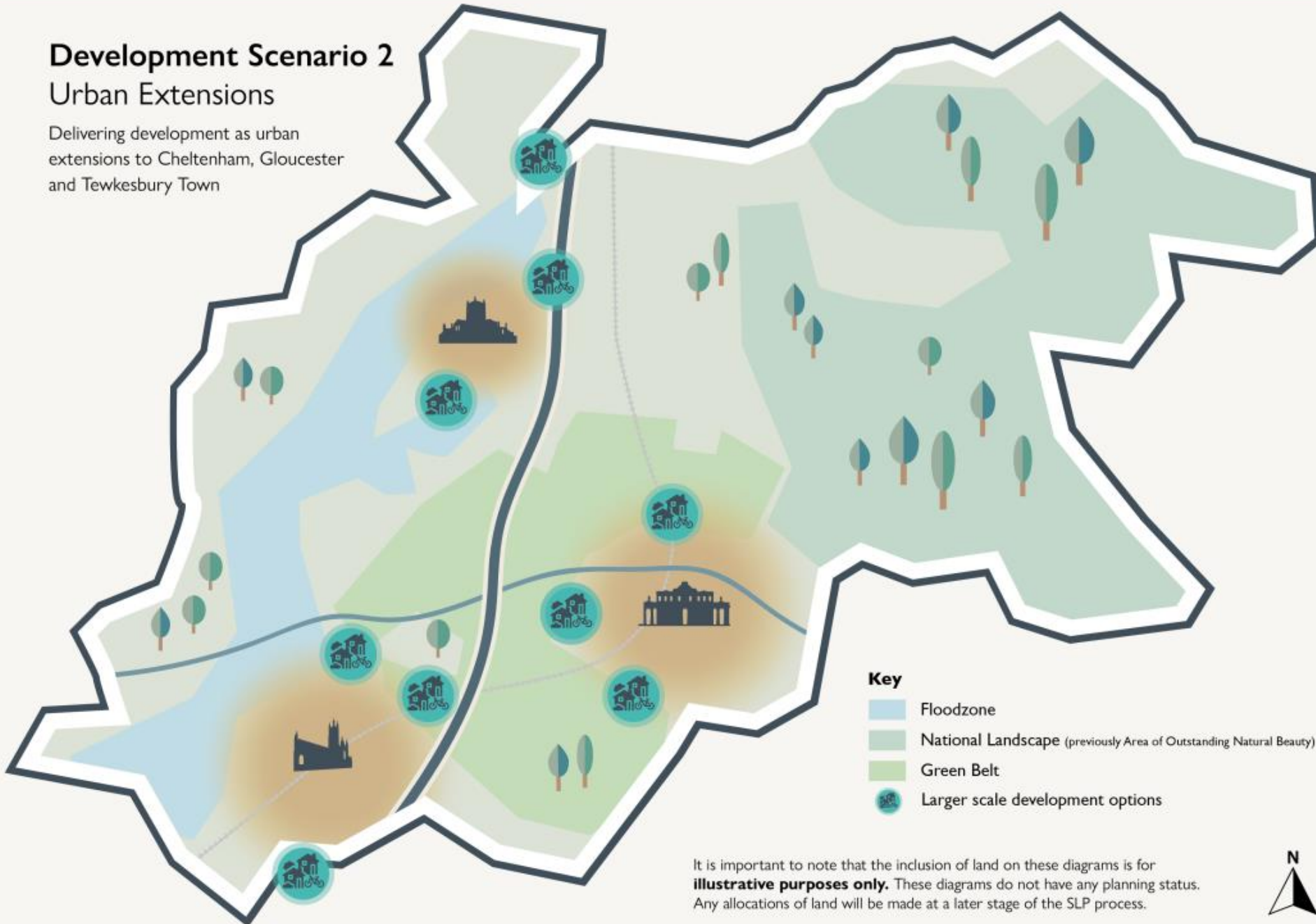
- Key**
- Floodzone
 - National Landscape (previously Area of Outstanding Natural Beauty)
 - Green Belt
 - Higher density development

It is important to note that the inclusion of land on these diagrams is for **illustrative purposes only**. These diagrams do not have any planning status. Any allocations of land will be made at a later stage of the SLP process.



Development Scenario 2 Urban Extensions

Delivering development as urban extensions to Cheltenham, Gloucester and Tewkesbury Town



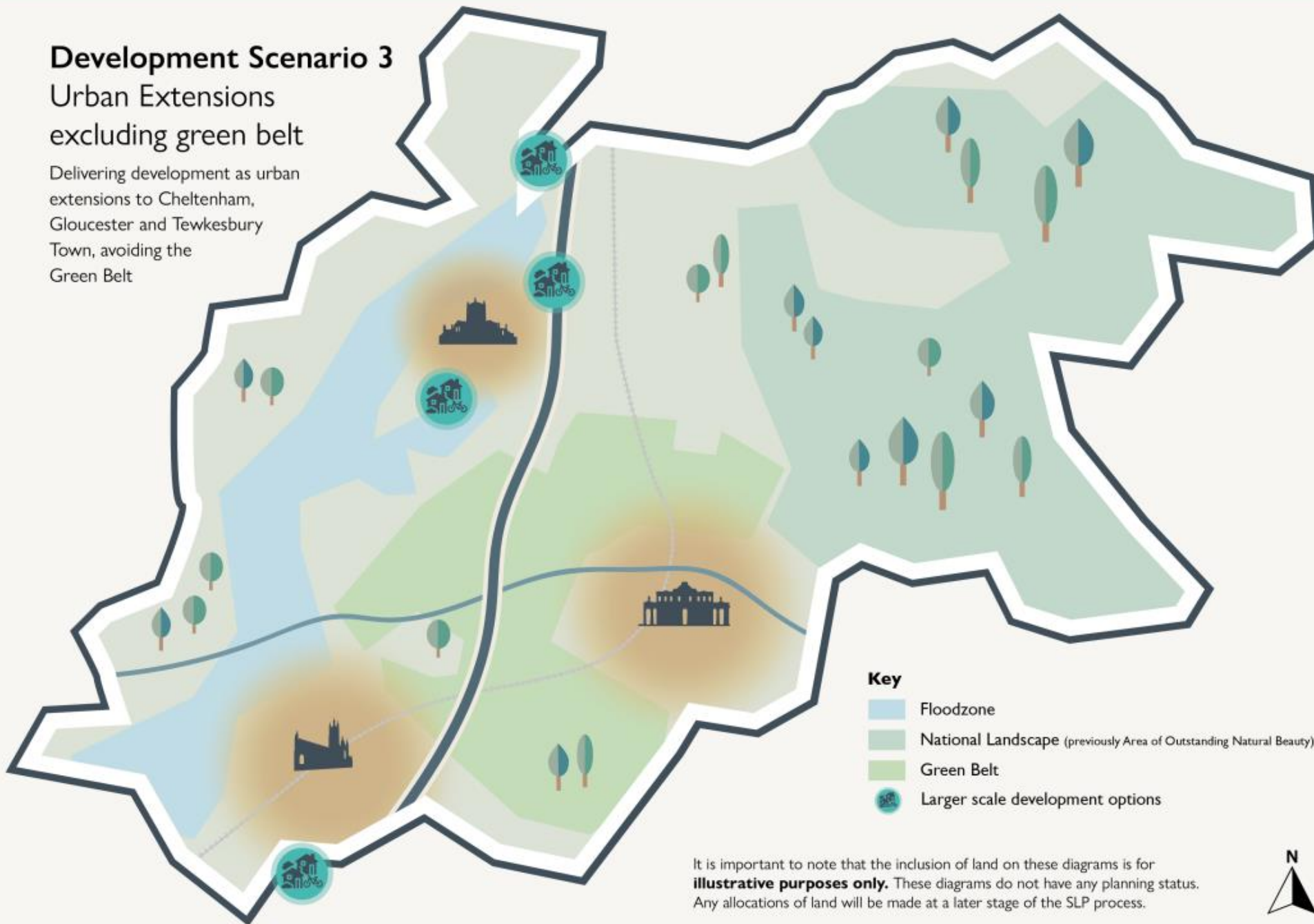
It is important to note that the inclusion of land on these diagrams is for **illustrative purposes only**. These diagrams do not have any planning status. Any allocations of land will be made at a later stage of the SLP process.



Development Scenario 3

Urban Extensions excluding green belt

Delivering development as urban extensions to Cheltenham, Gloucester and Tewkesbury Town, avoiding the Green Belt



It is important to note that the inclusion of land on these diagrams is for **illustrative purposes only**. These diagrams do not have any planning status. Any allocations of land will be made at a later stage of the SLP process.

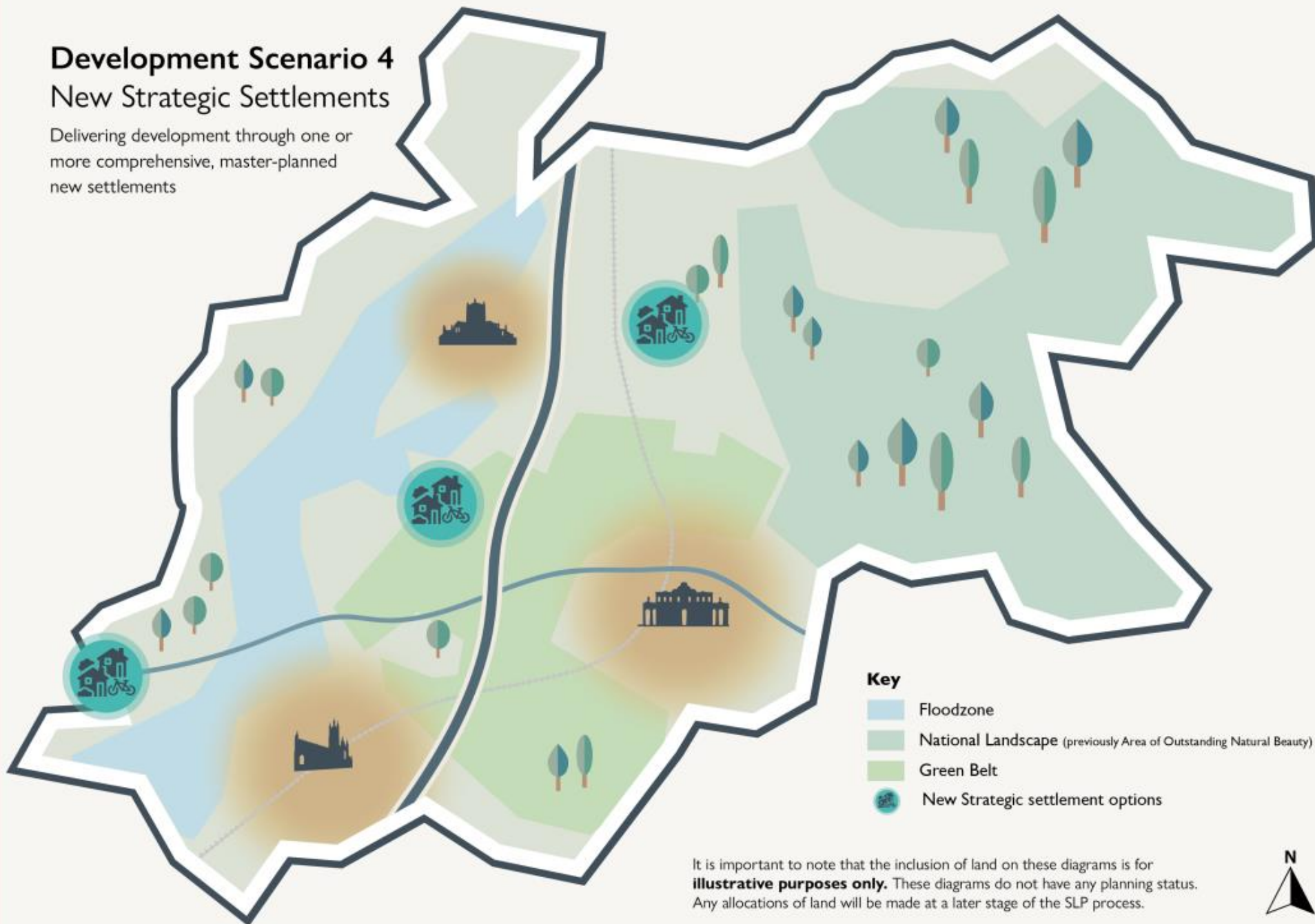


Strategic & Local Plan

Cheltenham, Gloucester & Tewkesbury

Development Scenario 4 New Strategic Settlements

Delivering development through one or more comprehensive, master-planned new settlements

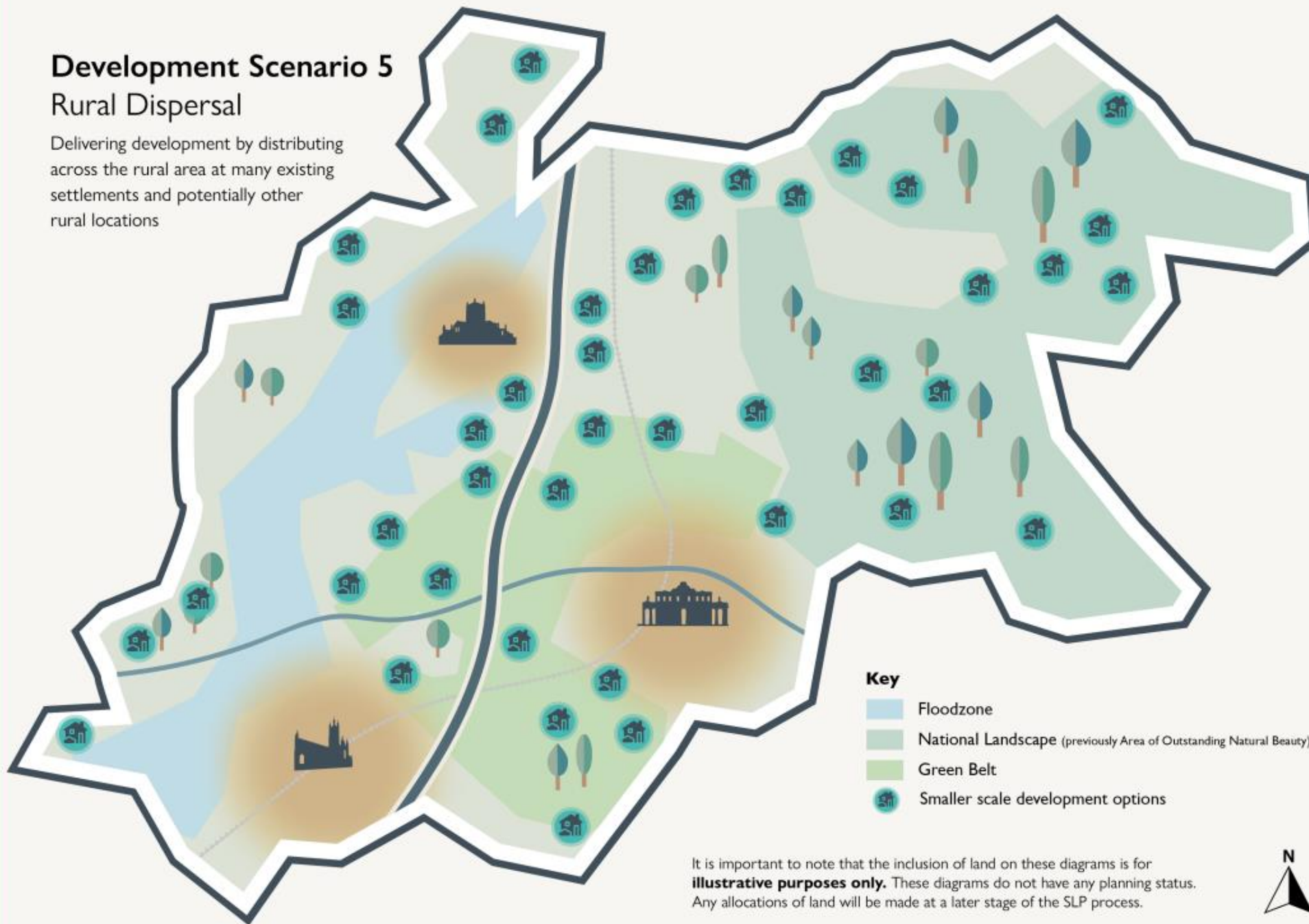


It is important to note that the inclusion of land on these diagrams is for **illustrative purposes only**. These diagrams do not have any planning status. Any allocations of land will be made at a later stage of the SLP process.



Development Scenario 5 Rural Dispersal

Delivering development by distributing across the rural area at many existing settlements and potentially other rural locations



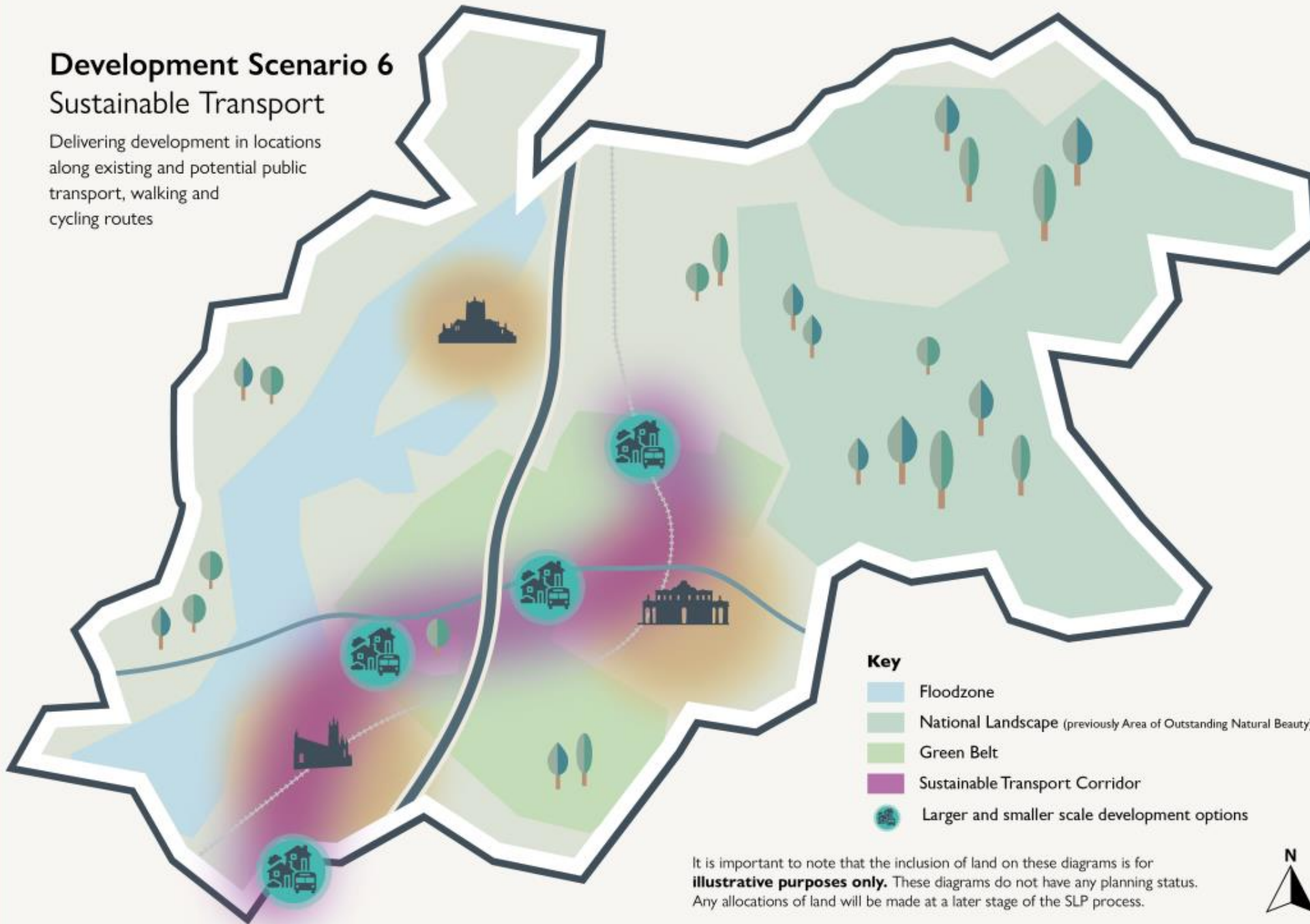
- Key**
-  Floodzone
 -  National Landscape (previously Area of Outstanding Natural Beauty)
 -  Green Belt
 -  Smaller scale development options

It is important to note that the inclusion of land on these diagrams is for **illustrative purposes only**. These diagrams do not have any planning status. Any allocations of land will be made at a later stage of the SLP process.



Development Scenario 6 Sustainable Transport

Delivering development in locations along existing and potential public transport, walking and cycling routes



It is important to note that the inclusion of land on these diagrams is for **illustrative purposes only**. These diagrams do not have any planning status. Any allocations of land will be made at a later stage of the SLP process.



How can I engage in the process?

- Dedicated website <https://strategiclocalplan.org/>
- Various in-person and digital events taking place (see next slide)
- Strongly encourage people to respond through the online consultation system - <https://strategiclocalplan.citizenlab.co/en-GB/>

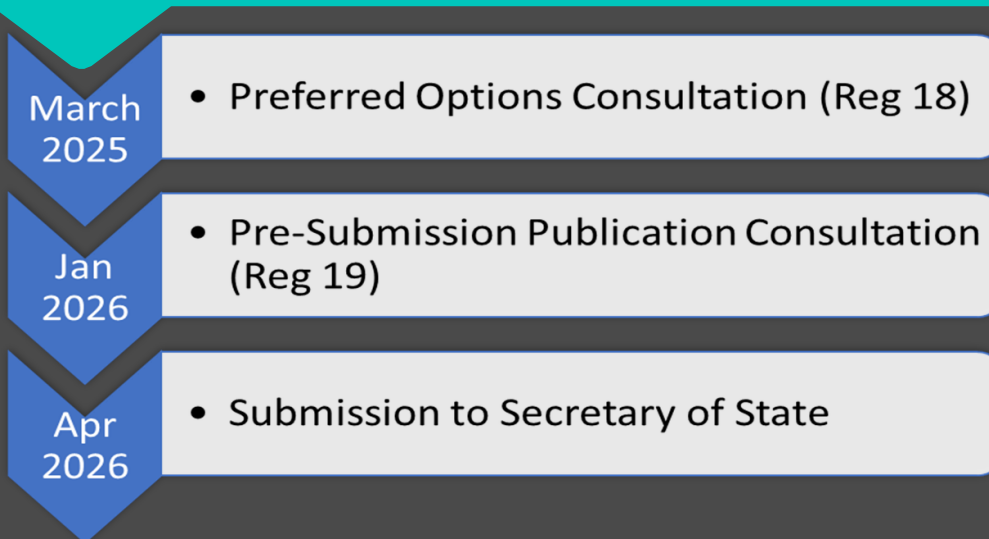


- New consultation database
- Consultation runs until 11.59pm on 12th March 2024

How can I engage in the process?

- Physical drop-in events:
 - Tewkesbury Town Hall, Winchcombe and Churchdown
 - Cheltenham x 2 – Regents Arcade
 - Gloucester x 2 – Kings Walk Shopping Centre
- 12 on-line digital events taking place across different themes
- 'Peer to peer' engagement with young people
- Social Media (Facebook, Next door, LinkedIn, X)
- Please help us publicise!

What are the next steps?



Regulation 18: a **general requirement** to consult on the Plan. Can be used to formally consult at any stage. Timing and content will allow people time to comment on the SLP through its formative stages.

Regulation 19: is a **requirement** that the **Local Planning Authority (LPA) MUST** consult on a Draft Local Plan before submitting to the Planning Inspectorate for independent examination.

Notes: The SLP will be going above and beyond the regulations in providing 2 x Regulation 18 consultations before the Regulation 19 consultation

Commissioning (amongst others):

- Strategic Flood Risk Assessment (SFRA)/Water Cycle Study
- Updating HELAA
- Local Housing Needs Assessment
- Economic Needs Assessment
- Transport Modelling
- Renewable Energy
- Green Belt Review
- Landscape Sensitivity Assessments

Any questions?

